



CINEFISH FILM FESTIVAL

WEDNESDAY 9TH NOVEMBER | 7:30PM (EST)

Destin Fort Walton Beach Convention Center

75TH GULF AND CARIBBEAN FISHERIES INSTITUTE

CINEFISH FILM FESTIVAL



FISH SMART

#ProtectYourCatch

FISHER-TO-FISHER ADVICE: FISH SMART

Description: This 4-min film is a call to action from fishers to their colleagues in the Wider Caribbean. It includes the description of the behavior that characterizes the species that aggregate to spawn, and the reasons why it's bad business to fish an FSA. It's also a call -from fisher to fisher- to participate in the decision making process and the search for alternatives; and ultimately FISH SMART, by protecting the spawning of these species.

Filmmaker: Ana Salceda / BelugaSmile Productions

Language: English

Running Time: 4:00

CINEFISH FILM FESTIVAL



SEA TURTLE SCIENCE DANCE

Description: This film uses dance to depict the history of the invention and adoption of the turtle excluder device. The movers are a mix of trained dancers and scientists. The choreography is drawn from a participatory process in which all the performers contribute movement to the dance.

Filmmakers: Lekelia D. Jenkins & Benjamin Sodenkamp

Language: English

Running Time: 5:34

CINEFISH FILM FESTIVAL



MAKING OF: SEA TURTLE SCIENCE DANCE

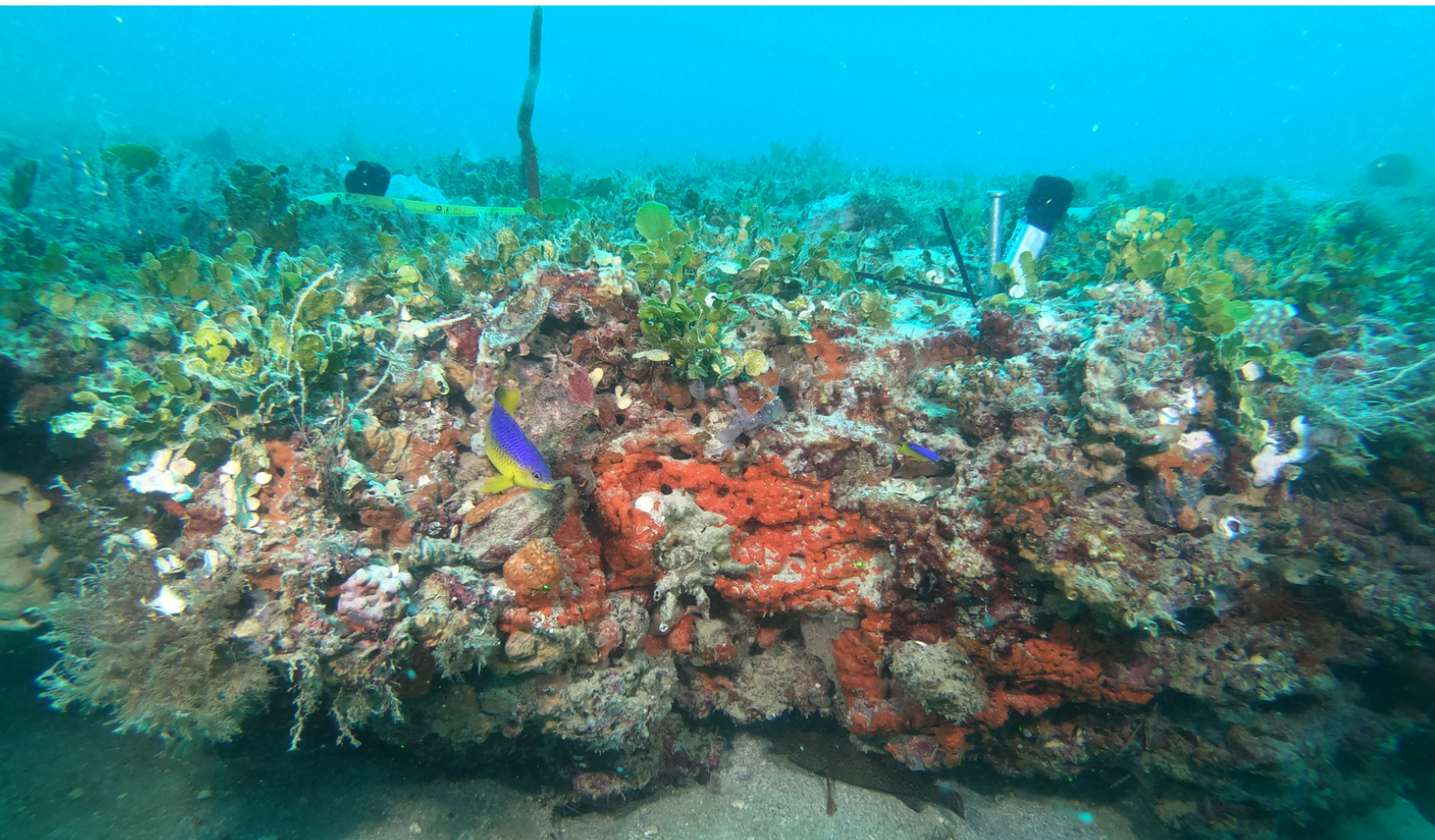
Description: This video shows clips from the award-winning Sea Turtle Science Dance interspersed with dancers reactions, thoughts, and feelings about the participatory process. Later analysis of these full exit interviews show that dancers had a greater knowledge of, value for, and empathy toward sea turtles, their protection, and conservation research.

Filmmaker: Lekelia D. Jenkins and Benjamin Sodenkamp

Language: English

Running Time: 8:28

CINEFISH FILM FESTIVAL



A BENTHIC AND FISH COMMUNITY ASSESSMENT OF WEST FLORIDA SHELF LEDGE ECOSYSTEMS

Description: PSA for a project to study the fish and benthic invertebrate communities associated with limestone ledges in the eastern Gulf of Mexico. A group of scientists has been closely looking at these habitats for the past few years to determine how they respond from short- and long-term stressors like red tides and climate change.

Filmmaker: Carlos Monzon

Language: English

Running Time: 7:08

CINEFISH FILM FESTIVAL



FISH SPAWNING AGGREGATIONS

(FSA)

AGREGACIONES REPRODUCTIVAS DE PECES (ARP)

FSAS, WHY PROTECT THEM?

Description: This video describes what an FSA is, what you can expect to see on an FSA site, what they used to be like in the past, what their current status is and why it matters to protect them.

Filmmakers: Manlio Martinez

Language: English

Running Time: 4:28

CINEFISH FILM FESTIVAL

Status of Coral Reefs **AGOA** of the World: 2020

#ForCoral
#WorldCoralReefStatus

ICRI
INTERNATIONAL
CORAL REEF INITIATIVE

GCRMN
GLOBAL CORAL REEF
MONITORING NETWORK

Australian Institute
OF MARINE SCIENCE

THE SIXTH GCRMN STATUS OF CORAL REEFS OF THE WORLD: 2020 ANIMATION

Description: The flagship product of the GCRMN is the Status of Coral Reefs of the World report that describes the status and trends of coral reefs worldwide. This sixth edition of the GCRMN Status of Coral Reefs of the World report is the first since 2008, and the first based on the quantitative analysis of a global dataset compiled from raw monitoring data contributed by more than 300 members of the network. The global dataset spanned more than 40 years from 1978 to 2019, and consisted of almost 2 million observations from more than 12,000 sites in 73 reef-bearing countries around the world.

Filmmaker: International Coral Reef Initiative (ICRI)

Language: English

Running Time: 1:44

CINEFISH FILM FESTIVAL

IMMERSED IN COASTAL RESOURCES

A Deep Dive into Ecotourism

IMMERSED IN COASTAL RESOURCES: A DEEP DIVE INTO ECOTOURISM

Description: The Coastal Resource Team of Destin Fort Walton Beach tourism is led by three dedicated marine biologists that bring authenticity and sustainable tourism to Okaloosa County, Florida. Each team member brings their own expertise related to innovative methods of sustainability, research support, education and ecotourism. This well-rounded group of scientists create opportunities for guests to experience and interact with nature responsibly, along the coast of Northwest Florida all while improving the marine environment so that it may remain viable for generations to come.

Filmmaker: Nick Tomecek, April Sarver, Alex Fogg, Shane Reynolds, Mike Norberg, Jessica Valek

Language: English

Running Time: 10:00

CINEFISH FILM FESTIVAL



Nassau Grouper Against the clock

NASSAU GROUPEr AGAINST THE CLOCK

Description: Call to action addressed to decision-makers and enforcement officials that promotes the closed season for Nassau grouper from December to March. It shows the critical status of this species throughout the wider Caribbean, and the success stories documented by scientists studying its recovery within properly enforced, protected areas.

Filmmaker: Ana Salceda / BelugaSmile Productions

Language: English

Running Time: 3:30

CINEFISH FILM FESTIVAL



COLLECTING AND INCUBATING THE EGGS FOR A QUEEN CONCH HATCHERY

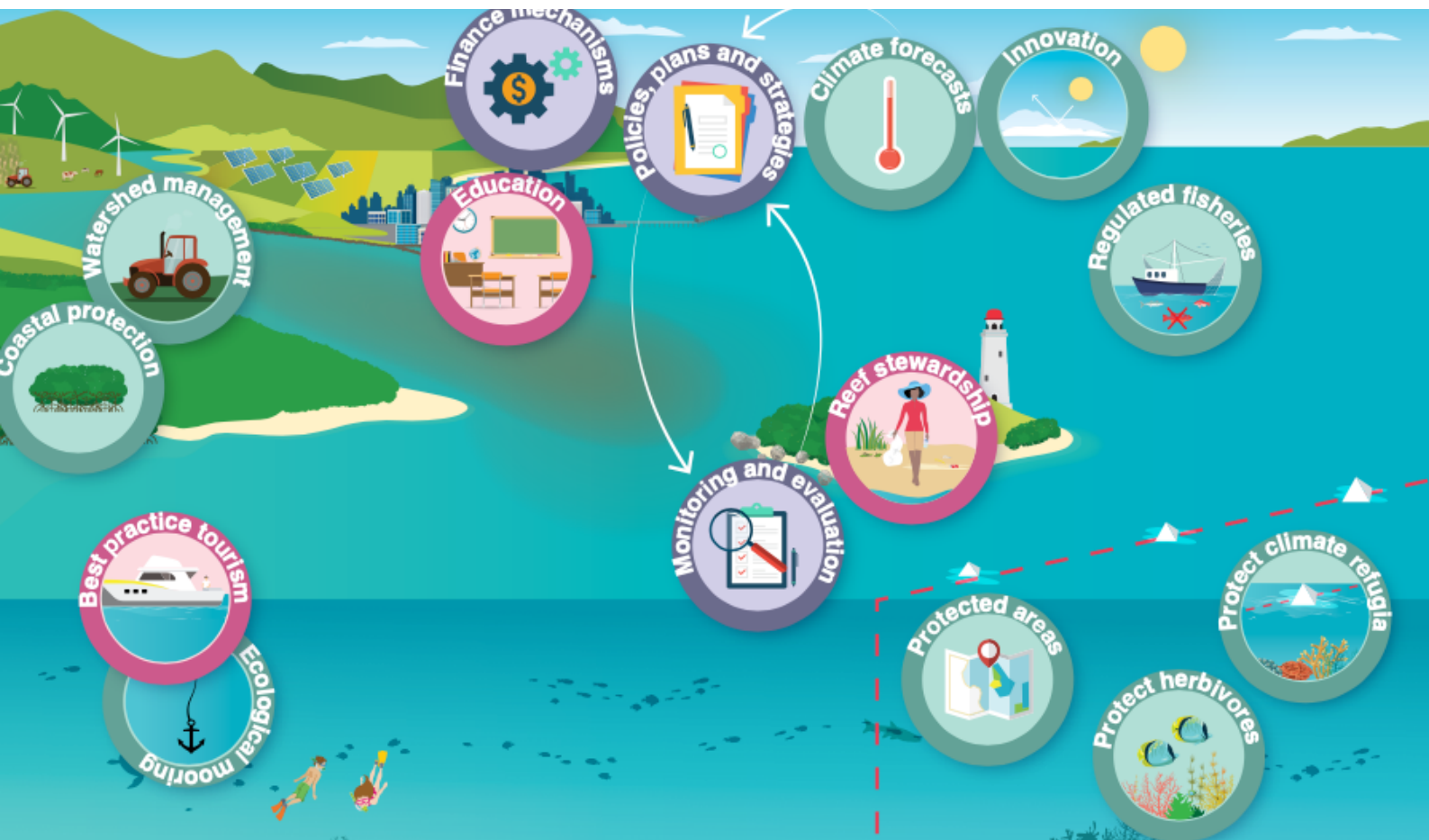
Description: The key to a successful queen conch hatchery is wild and sustainably-sourced egg masses. During spawning season in Puerto Rico, the queen conch lays about 10 egg masses, each with 500,000 eggs. In this film (as part of the "eConch" training series), Dr. Megan Davis and Victoria Cassar work with fisherman, Julio Ortiz, on collecting and incubating the eggs found off the coast of the Naguabo Aquaculture Center; a partnership between Florida Atlantic University Harbor Branch Oceanographic Institute, Conservación ConCiencia, and the Naguabo Fishing Association, with support from Saltonstall-Kennedy NOAA Fisheries Grants.

Filmmakers: Timber & Frame, Megan Davis, Becky Holt

Language: English

Running Time: 9:53

CINEFISH FILM FESTIVAL



WHAT IS RESILIENCE-BASED MANAGEMENT AND WHY DO WE NEED IT?

Description: With the increased awareness of the vulnerability of coral reefs and the vital role that they play in supporting nature and people, there is an urgent need to build coral reef resilience into marine conservation efforts globally. The ICRI ad hoc committee on Resilience-Based Management was established to further consider what managing for resilience is, how it applies to the management of coral reefs and associated ecosystems as well as relationships with dependent human communities, and discuss the range of resilience-based management tools and resources that are available for coral reef managers.

Filmmaker: International Coral Reef Initiative (ICRI)

Language: English

Running Time: 1:48

CINEFISH FILM FESTIVAL



CONVERSATIONS – SARGASSUM EXCHANGE. BROWN CURSE OR GOLDEN BLESSING

Description: This video was prepared by Mrs. Bethia Thomas in collaboration with the residents of Dennery Village, Saint Lucia, as part of the 'Voice of the Invisible' Community Meetings and Training. A special feature of Mrs. Thomas' PhD research, Objective 4, is the Voice of the Invisible which specifically targeted the poor, disabled, women and minority groups like Rastafarians, who may have been excluded from previous data collection processes in Sargassum Management. As a result, their views would have been inadvertently excluded. This forum allowed their 'voices' to be heard and their views captured.

Filmmaker: Bethia Thomas

Language: English

Running Time: 13:21

CINEFISH FILM FESTIVAL



UNBELIEZEABLE

Description: Production trailer for UNBELIEZEABLE, a forthcoming feature length documentary that explores marine conservation in Belize and the role played by women leaders, from all walks of life, in protecting the country's marine environment and associated livelihoods.

Filmmakers: Eladio Arvelo, Phil Karp, Shareef Haq, Nyasha Laing

Language: English

Running Time: 6:00