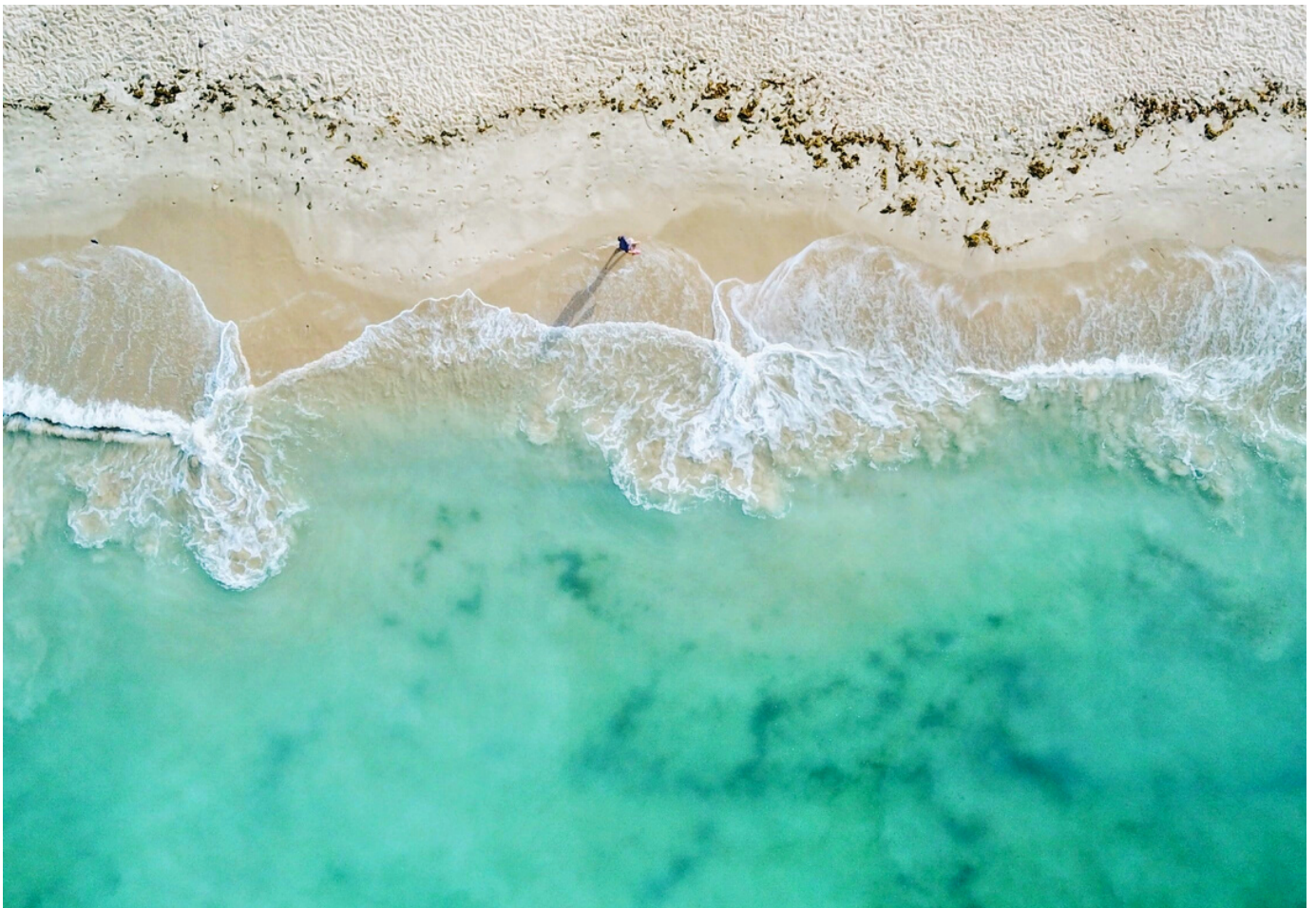


PROGRAM

**75TH ANNUAL
GULF AND CARIBBEAN
FISHERIES INSTITUTE
NOVEMBER 7 - 11, 2022**



FORT WALTON BEACH, FLORIDA

ABOUT GCFI

The Gulf and Caribbean Fisheries Institute (GCFI) was founded in 1947 to promote the exchange of information on the use and management of marine resources in the Gulf and Caribbean Region. From its beginning, GCFI has endeavored to involve scientific, governmental, and resource-use sectors in providing a broad perspective on relevant fisheries issues. The GCFI membership comprises over 40 nations and territories representing university faculty and students, governmental agencies, policy-makers, private sector, fishers, non-governmental organizations, and other stakeholders.



ABOUT THE CONFERENCE

GCFI is partnering with the Okaloosa County, the Destin – Fort Walton Beach Convention Center and Visitor Bureau to host GCFI75. The theme of this year's conference is "Understanding connectivity of coastal and estuarine ecosystems: Highlighting Successes & Learning from Challenges".



SUNDAY 6TH NOVEMBER

ADVANCING THE SCIENCE OF FISH AGEING WORKSHOP | 9:00 - 17:00 (EST)

Presented by staff of the NOAA/NMFS/Southeast Fisheries Science Center's Biology & Life History Branch and invited experts, this workshop will demonstrate and teach the range of techniques from simple to advanced technologies used to estimate age of fishes. The information and techniques may help to expand the capacities of local agencies, as well as improve the quality of age data used in fishery assessments. There is no cost for attending but please register ahead of time. For additional information on the workshop email, ron.hill@noaa.gov.

Planned Agenda

- 9:00 - 9:20: Introduction to Fish Ageing
- 9:20 - 11:00: Ageing fish with hard parts: Otoliths, spines, scales, vertebrae
- 11:00 - 12:00: Understanding variation and ageing error
- 12:00 - 13:00: Lunch
- 13:00 - 14:00: Age validations
- 14:00 - 16:00: Advanced techniques / Alternative approaches in fish ageing

REGIONAL WOMEN IN FISHERIES FORUM | 13:00 - 18:00 (EST)

As part of the International Year of Artisanal Fisheries and Aquaculture (IYAFA 2022), the first Regional Women in Fisheries Forum will be held on the margins of GCFI75. This special session aims to acknowledge, celebrate, and recognize women's vital role across the small-scale fisheries and aquaculture value chain. In this session, interested individuals from across the region will have the opportunity to network and learn from each other based on experiences in their respective countries. In addition, this session will identify current best practices across the region on integrating gender in fisheries and fostering an arena for equal participation of women in policy and practice. This workshop will feature small-group discussions, keynote presentations, and scenario planning.

The session is organized into two sub-sessions:

Session 1 (1-3pm): This is an open session focused on celebrating and empowering women in fisheries in the region.

Session 2 (3pm – 6pm): This is a working session. Participants will actively engage in discussions on identifying entry points for mainstreaming women's role in current policy and practice.

REGISTRATION | 16:00 - 18:00 (EST)



MONDAY 7TH NOVEMBER

GCFI75 OPENING CEREMONY | 8:30 - 9:00 (EST)

Opening Remarks

- Alejandro Acosta (GCFI Program Chair)
- Mel Ponder (Chairman of Okaloosa County Board of County Commissioners)
- Gary Jarvis (Mayor, City of Destin)
- Alex Fogg (Host, GCFI75)
- Henri Valles (Chair GCFI Board of Directors)



GCFI75 KEYNOTE: BOB GLAZER | 9:00 (EST)

A Users' Guide for Managing the Planet Earth in the Anthropocene

Bob recently retired from the Florida Fish and Wildlife Commissions' Fish and Wildlife Research Institute where he served as the Principal Investigator of the queen conch research and restoration program in Marathon. His research focused on stock restoration, essential habitat, larval recruitment, endocrine disruption, marine fishery reserves, and stock structure. He has worked extensively on molluscan aquaculture for both commercial and restoration projects. Bob also served as the Principal Investigator on a number of climate change adaptation projects.

Bob developed the KeysMAP (Florida Keys Marine Adaptation Planning) program which uses scenarios to develop climate adaptation strategies, identifies triggerpoints for implementing the strategies, and develops monitoring program to identify when the triggerpoint is attained. He also served as the chair of the Monroe County Climate Change Advisory Committee whose objective is to make recommendations to the Board of County Commissioners on how best to adapt to a changing climate in the Florida Keys. In 2016 he received the Leadership Award Honorable Mention of the National Fish, Wildlife, and Plants Climate Adaptation Strategy.

Question & Answer Session

OPENING BELL | 9:55 (EST)

Joanna Pitt, GCFI Vice Chair

COFFEE BREAK | 10:00 - 10:30 (EST)

MONDAY 7TH NOVEMBER

SMALL SCALE FISHERIES | 10:30 - 12:30 (EST)

- 10:30 **Nicolás Gómez-Andújar** Social cohesion varies between associated and independent small-scale commercial fishers in Puerto Rico
- 10:45 **James Foley (V)** Digital transformations to the Belize lobster fishery that have resulted in the Belize Spiny Lobster Fishery Improvement Project achieving an 'A' rating on FisheryProgress.org
- 11:00 **Shelly-Ann Cox** DigiFish: Promoting the use of digital technologies and innovative data analytical methods to support the application of the Ecosystem Approach to Fisheries (EAF) in Barbados
- 11:15 **Luis Alberto Rincón-Sandoval (V)** The fishery performance indicators for red grouper (*Epinephelus morio*) fishery, Yucatan Mexico
- 11:30 **Krista Sherman** Status of parrotfish populations on coral reefs around New Providence and Rose Island, Bahamas
- 11:45 **Henri Vallés** An assessment of the impact of the lionfish invasion on shallow reef fish communities and fishing yields in Barbados
- 12:00 **Kelly Kingon** How has the community, distribution and diversity of sharks changed since the 1980s in Trinidad?
- 12:15 **Inés Lopez** The way to Yucatan Octopus sustainability in the misinformation era: challenges and opportunities

LUNCH BREAK | 12:30 - 14:00 (EST)

SPECIAL SESSION | 14:00 - 16:15 (EST)

Linking The International Year Of Artisanal Fisheries And Aquaculture To Sustainable Blue Economy Development In The Gulf And Caribbean Region.

Moderator: Eric Wade; Sponsored by WECAFC & GCFI

Introduction to the session

- 14:15 **Megan Davis** Community-based Naguabo Aquaculture Center in Puerto Rico
- 14:30 **Sara Marriott** Guardians of the sea: Perceptions of Marine Protected Areas by fishers; lessons learned from the Philippines
- 14:45 **Marta Calosso** Adrift in troubled waters: 'Blue Justice' for small-scale fisheries in the Turks and Caicos Islands
- 15:00 **Dalila Aldana Aranda (V)** Incidence and impact of the COVID-19 pandemic on fishing activity in the Caribbean
- 15:15 **Ingrid Parchment** Bridging the gap on the impact of COVID19
- 15:30 **William Heyman** Gladding Memorial Awards: Honoring and supporting sustainable fishing ambassadors for nearly two decades
- 15:45 **Eric Schneider** Evaluating post-harvest survival based on claw removal technique in the western Atlantic stone crab fishery, and engaging fisher networks to implement best practices
- 16:00 **Terrence Phillips** National intersectoral links with Caribbean artisanal fisheries and aquaculture considerations and cases

Closing remarks

MONDAY 7TH NOVEMBER

COFFEE BREAK | 16:15 - 16:30 (EST)

FISHERS FORUM | 16:30 - 18:00

Moderator: Cecil Marquez | Sponsored by Shell & GCFI

Opening remarks

- **Cecil Marquez** Introduction to Fisheries for Fishers (F4F) initiative, and its linkages to the International Year of Artisanal Fisheries and Aquaculture (IYAFA)
- **Mimi Stafford** (GMA Winner 2021)
- **Prescott Smith** (GMA Winner 2021)
- **Sylvia White** (Barbados)

Fisher Forum Panel Discussion

Presentation of the Gladding Memorial Award

Closing remarks

OPENING BANQUET & RECEPTION | 19:00 (EST)



TUESDAY 8TH NOVEMBER

REEF FISHERIES | 8:00 - 10:00 (EST)

- 8:00 **Jessica Carroll** Dorsal fin spines and rays as non-lethal ageing structures for goliath grouper *Epinephelus itajara*
- 8:15 **Kristin Cook** Demographic variation of lane snapper *Lutjanus synagris* from the eastern Gulf of Mexico, USA
- 8:30 **Austin Draper** Multispecies use of a north-central Gulf of Mexico estuary prior to oyster reef restoration
- 8:45 **Robert Ellis** Fifteen years of Goliath Grouper research in Florida: documenting the recovery of an iconic reef fish
- 9:00 **Carissa Gervasi** System dynamics of red snapper populations in the Gulf of Mexico to support ecosystem considerations in the assessment and management process
- 9:15 **Zachary Gillum** Comparison of video and traps for detecting reef fishes and quantifying species richness in the continental shelf waters of the S.E. United States
- 9:30 **Jack Olson** Evaluating the influence of modeled oceanographic variables on early juvenile fish abundance in the Middle Florida Keys
- 9:45 **Walt Rogers** Validation of annual growth zone formation in gray triggerfish *Balistes capriscus* dorsal spines, vertebrae, and otoliths.

COFFEE BREAK | 10:00 - 10:15 (EST)

REEF FISHERIES | 10:15 - 12:00 (EST)

- 10:15 **Jennifer Potts** Validation of annual formation of growth zones of red porgy, *Pagrus pagrus*, and identification of first annulus
- 10:30 **Beverly Barnett** Fourier Transform Near Infrared (FT-NIR) spectroscopy as a rapid and transformative method for estimating fish age
- 10:45 **Jesse Secord** Patterns of reef fish abundance and assemblage composition at coral outplant sites using artificial structures in the Florida Keys and Implications for restoration success
- 11:00 **Hayden Menendez** Sex change at sea in sequential hermaphrodites supporting important fisheries: comparing rates of transition and sex ratios in gag (*Mycteroperca microlepis*) and scamp
- 11:15 **Daniel Lippi** Diel variability in the activity patterns of two endemic Brazilian reef fish species
- 11:30 **Laia Muñoz Abril*** Variation in reproductive characteristics of red snapper (*Lutjanus campechanus*) in the northcentral Gulf of Mexico
- 11:45 **Stephen Szedlmayer** Comparisons of home range, site fidelity and mortality of red snapper *Lutjanus campechanus* on artificial & natural reefs in the northern Gulf of Mexico

LUNCH BREAK | 12:00 - 14:00 (EST)

FISHERS FIELD TRIP | 13:30 - 17:30 (EST)

For fishers and other participants from around the Gulf and Caribbean Region to learn about the commercial and recreation fishing industries in Destin, FL. Local leaders in the fishing community will guide and interact with field trip participants to maximize the learning exchange.

Sponsors: Shell Energy Company, LGL Ecological Research Associates, GCFI



TUESDAY 8TH NOVEMBER

FISH SPAWNING AGGREGATIONS | 14:00 - 15:00 (EST)

- 14:00 **Eric Appeldoorn-Sanders** Characterization and long-term temporal patterns of red hind grouper, *Epinephelus guttatus*, chorusing events.
- 14:15 **Jessica Keller** A multidisciplinary approach to monitoring fish spawning aggregations: an example in the Florida Keys and Dry Tortugas
- 14:30 **Kayla Blincow** Measuring the influence of adjacent land development and sedimentation on the spawning behavior of yellowtail parrotfish (*Sparisoma rubripinne*) in Reef Bay, St. John
- 14:45 **Cecilia Guerrero** Building knowledge of fish spawning aggregations at Cayman Crown, Belize through monitoring and protection

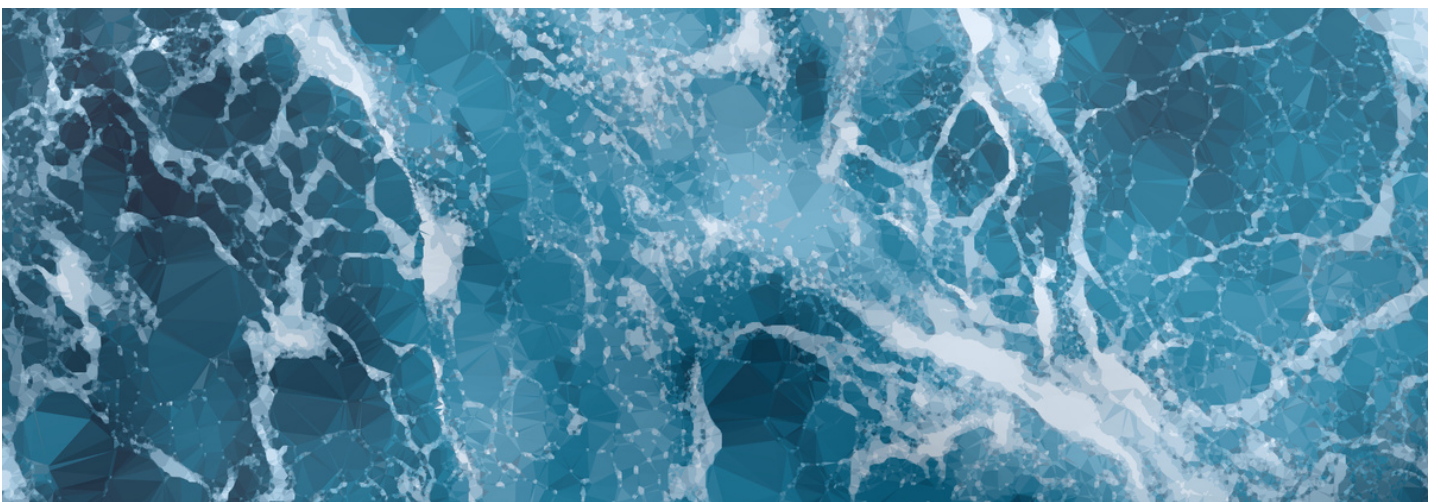
SOCIO ECONOMICS & GOVERNANCE | 15:00 - 16:45

- 15:00 **John Claydon** The prevalence of mislabelled grouper in the Turks and Caicos Islands: causes, effects, and potential solutions
- 15:15 **Adyan Rios** Progress on an Ecosystem Status Report for the U.S. Caribbean region
- 15:30 **Stacey MacDonald** One year later: Developments in fishery co-management on Bonaire
- 15:45 **Martha Prada** Moving forward regional voluntary commitments towards better sustainable management fisheries in the Western Atlantic: the case of queen conch and fish spawning aggregations
- 16:00 **Tauna Rankin** Putting EBFM into action for the U.S. Caribbean EEZ
- 16:15 **Sharon Hutchinson (V)** What is motivating shrimp bycatch Discards in artisanal and commercial fisheries?
- 16:30 **Taylor Beyea** Characterizing bycatch in the Gulf of Mexico United States Federal Shrimp Fishery - Resolving barriers to sustainable fishery certification

COFFEE BREAK | 16:45 - 17:00 (EST)

MEETING OF THE GCFI MEMBERSHIP | 17:00 - 17:45 (EST)

POSTER SESSION | 18:30 - 20:30 (EST)



6:30 – 7:15 | GROUP 1A: Miscellaneous

- **Alleyne, Kristie.** The development of a rapid sampling protocol to assess the biodiversity associated with pelagic sargassum
- **Ali, Fadilah.** Exploring the GPML Digital Platform
- **Georges, Jeff.** Assessment of the potential raw materials available in Haiti, for a sustainable aquaculture
- **Toppin, Jillian.** Experiences and Opportunities as an Intern with Okaloosa County Coastal Resource Team
- **Pena, Maria.** Voices from the Shore Theatre Collective: women fisherfolk learning to apply popular theatre to transform small-scale fisheries

6:30 – 7:15 | GROUP 2A: Elasmobranchs & Turtles

- **Higgs, Jeremy.** Multiple new records of the ragged-tooth shark, *Odontaspis ferox*, from the western North Atlantic Ocean
- **Boggio-Pascua, Atlantine.** Devils in our ocean backyard: Preliminary data from the western coast of Florida and call for contributions to elucidate the distribution and seasonality of *Mobula hypostoma* in the Gulf of Mexico and the Caribbean Sea
- **Bassos-Hull, Kim** Collaborative acoustic telemetry networks are critical to monitoring movement patterns of migratory elasmobranchs: Case study with whitespotted eagle rays and Western Atlantic pygmy devil rays in the Gulf of Mexico
- **Valek, Jessica.** Sea turtle nesting trends and outreach efforts in Okaloosa County, Florida, USA
- **Siegfried, Tabitha.** Insights Into Sea Turtle Population Composition Obtained with Stereo-Video Cameras in situ across Nearshore Habitats in the Northeastern Gulf of Mexico

6:30 – 7:15 | GROUP 3A: Protected Areas and Species

- **Camacho-Thomas, Ruleta.** Leveraging funding to facilitate management: NDNP's Biopama project
- **Pusineri, Claire.** From CARIMAM project to a sustainable Caribbean network for marine mammal conservation
- **Aquino, Jamie.** Preserving Haiti's marine ecosystems and endangered marine megafauna through community-based conservation, education, research, and ecotourism initiatives in the Baraderes-Cayemites Marine Protected Area
- **Vidotto, Eglá Sussana.** Influx of fish larvae in the Sandy Bay – West End Special Marine Protection Zone (SBWE-SMPZ), Roatan, Bay Islands, Honduras
- **Blazy, Christophe.** Ecosystem and habitat restoration in the Caribbean with Nature-based solutions, the case study of the Carib-Coast Project

6:30 - 7:15 | Virtual Room

- ***Bailey, Katherine (V).** A review on the effect of fisheries on the population dynamics of multispecies Caribbean parrotfish (Scaridae) populations.
- ***Boudault, Mehdi (V).** Morphological variability of *Ocyurus chrysurus* in coral reefs of Guadeloupe (Lesser Antilles)
- **Esser, Anne. (V)** Precarity and informal social protection among women working in the Barbados fishing industry

7:15 – 8:00 | GROUP 1B: Invertebrates

- **Hagedorn, Samantha.** Methods to age the Caribbean spiny lobster (*Panulirus argus*) using the gastric mill ossicles
- **Kermode, Freyja.** Using growth band counts from gastric mill ossicles to estimate age of Caribbean spiny lobster, *Panulirus argus* (Latreille, 1804), in Bermuda
- **Shivlani, Manoj.** Strengthening the management of the Bahamian spiny lobster fishery: Steps towards the development of the Condo Gear Management Plan
- **Voss, Justin.** Warming sea surface temperature trends in the Florida Keys: Implications for queen conch (*Aliger gigas*) metapopulation persistence
- **Brittain, Candice.** Increasing post-release survivorship of stone crab and engaging fisher networks to implement best practices

7:15 – 8:00 | GROUP 2B: Fisheries

- **Baudrier, Jerome.** First assessment of recreational fisheries in French Caribbean territories
- **Prouse, Alexandra.** Preliminary assessment of common dolphinfish trophic ecology across ocean basins
- **Stephens, Shane.** Habitat use and migrations of Atlantic tarpon in the Northern Gulf of Mexico
- **Garner, Steve.** Sensitivity of red snapper stock assessment models to age data inputs estimated with near infrared spectroscopy
- **Branham, Creed.** Vertical habitat use of greater amberjack (*Seriola dumerili*) around artificial structures in the Gulf of Mexico

7:15 – 8:00 | GROUP 3B: Habitats

- **Krebs, Brondum.** Habitat Use and Ecosystem Connectivity of Fishes at Outer-shelf Reef Systems in the Northern Gulf of Mexico
- **Mullins, Lindsay.** Preliminary insights into the spatiotemporal impacts of habitat change on two upper-trophic level estuarine predators
- **Powers, Monica.** Evidence of potential growth overfishing on artificial reefs in shallow areas of the northcentral Gulf of Mexico based on a long-term, fisheries-independent survey: the Shipp Index (1998-2021)

7:15 - 8:00 | Virtual Room

WEDNESDAY 9TH NOVEMBER

SPECIAL SESSION | 8:45 - 12:40 (EST)

Living With Sargassum: Current Scientific Perspectives And Future Outlook For Fisheries, Coastal Managers And Entrepreneurs

Moderators: Francis Neat & Hazel Oxenford | Sponsored by: Global Ocean Institute, World Maritime University, Sweden in association with CERMES & GCFI.



SESSION KEYNOTE: DR. SHELLY ANN COX *Transatlantic Triple Threat*

For more than a decade, the Wider Caribbean and West Africa have experienced an unprecedented Transatlantic Triple Threat- Sargassum Influxes. This threat has also been described by scientists as the Great Atlantic Sargassum Belt, emphasizing the magnitude and complexity of this environmental issue. Sargassum influxes have caused significant social, economic and environmental impacts resulting in challenges to already strained climate-sensitive socio-economic sectors. Emerging impacts recently reported in the energy and water sectors highlight the need for adaptive management strategies to address this crisis.

While efforts to explore potential opportunities are underway, the reality is that sargassum influxes remain more of a threat than a benefit until key issues are resolved. This presentation provides guidance on the operationalisation of the strategy framework and blue economy links proposed in the UNEP-CEP Sargassum White paper (2021). Existing and potential interventions are categorised under three main headings: Adaptation, Mitigation and Policy Development and Coordination. Established, emerging and nascent solutions including examples of sargassum product innovation will also be presented. Making the shift from a triple threat to opportunity requires more attention to potential value chains. Considerations for logistics, costs and resources at each stage of a potential sargassum value chain will be presented as well as cross cutting activities that support quality control and environmental and social safeguards.



WEDNESDAY 9TH NOVEMBER

SPECIAL SESSION | 8:45 - 12:40 (EST)

Living With Sargassum: Current Scientific Perspectives And Future Outlook For Fisheries, Coastal Managers And Entrepreneurs

Moderators: Francis Neat & Hazel Oxenford | Sponsored by: Global Ocean Institute, World Maritime University, Sweden in association with CERMES and the Gulf and Caribbean Fisheries Institute

- 9:25 **Kristie Alleyne** A spatiotemporal analysis of sargassum impacting the eastern Caribbean: morphotypes and sub-origins
- 9:40 **Makeda Corbin** Answering the Golden Question: How fast does pelagic sargassum grow in the Tropical Atlantic?
- 9:55 **Dalila Aldana Aranda (V)** Contamination of sargassum by microplastics and heavy metals
- 10:10 **Nathan Putman (V)** Sargassum Inundation Reports: validating satellite monitoring with citizen science photos
- 10:25 **Judith Raming** Turning the tide on the Brown tide: Bonaire's Sargassum Response Plan

COFFEE BREAK | 10:40 - 11:10 (EST)

- 11:10 **Micaela Small** The complexities of validating sargassum forecasts
- 11:25 **Haibo Xu (V)** Improvement of Sargassum Seaweed tracking in Puerto Rico and Virgin Islands Using High Resolution FVCOM
- 11:40 **Kim Baldwin** Sargassum Monitoring Protocol with drones: methods for rapidly estimating beached sargassum
- 11:55 **Paulina Zanela (V)** Holistic approach to sargassum management: Unmanned electric harvesters and micro biorefineries
- 12:10 **Janice Cumberbatch** Adaptive Capacity, Governance and Small Island Developing States: a case study of Sargassum management in the Caribbean
- 12:25 **Bethia Thomas*** A Community-based Participatory Approach to Vulnerability Analysis for Pelagic Sargassum Influxes in the Eastern Caribbean: Composite Indicators, Drivers and Conceptual Frameworks for Adaptation Planning

LUNCH BREAK | 12:40 - 14:00 (EST)

FIELD TRIPS | 14:00 - 18:00 (EST)

- Scuba Diving – Destin - Fort Walton Beach Artificial Reefs
- Emerald Coast Science Center
- US Air Force Armament Museum
- Veterans Park Bay Walk (Self-Guided)
- Gulfarium Marine Adventure Park (Self-Guided)

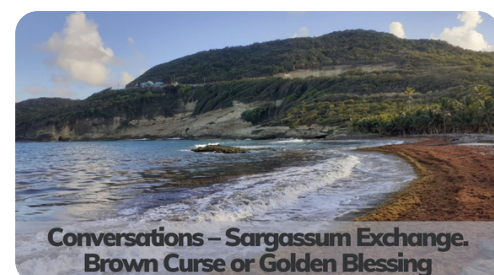
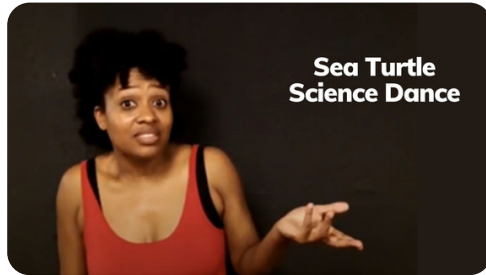
CINEFISH | 19:30 - 21:00 (EST)

Moderator: Fadilah Ali | Sponsored by GCFI



WEDNESDAY 9TH NOVEMBER

FILM LISTING: CINEFISH FILM FESTIVAL



THURSDAY 10TH NOVEMBER

DEMERSAL AND PELAGIC FISHERIES | 8:30 - 10:00 (EST)

- 8:45 **Jade Carver** Impact of artificial reef deployment on reef fish movement and community assemblages
- 9:00 **Sharon Hutchinson(V)** Future earnings lost due to shrimp trawl discards - Savings from a bycatch reduction trial
- 9:15 **Ana Osowski** Co-producing a shared characterization of depredation in the Gulf of Mexico reef fish fishery
- 9:30 **Kara Wall** Site fidelity of red snapper (*Lutjanus campechanus*) on natural and artificial reefs in the eastern Gulf of Mexico
- 9:45 **Emily Waddell** Effects of anthropogenic noise and natural soundscape on larval fish behavior in four estuarine species

COFFEE BREAK | 10:00 - 10:30 (EST)

EMERGING ISSUES (Climate Change, Marine Litter, Invasive Species, Stony Coral Tissue Loss Disease) | 10:30 - 12:00 (EST)

- 10:30 **Holden Harris** Impacts of land use and climate change on coastal foodwebs & fisheries
- 10:45 **Sebastian Herrera (V)** Blue carbon stocks in mangroves of an oceanic island biosphere reserve in the Caribbean Sea
- 11:00 **Jesse Williams (V)** Assessing vulnerabilities to climate change In Trinidad & Tobago using a rapid vulnerability assessment
- 11:15 **Dalila Aldana Aranda (V)** Microplastics pollution in green turtle in the Caribbean
- 11:30 **La Daana Kanhai (V)** The human dimension of plastic pollution in Trinidad & Tobago
- 11:45 **Fadilah Ali** Introducing the Global Partnership on Marine Litter (GPML) Digital Platform
- 12:00 **Jennifer Stein** Estimating coral population losses across the Florida Reef Tract due to Stony Coral Tissue Loss Disease
- 12:15 **Crystal Hightower** Rapid expansion and subsequent decline of Red Lionfish in the Alabama Artificial Reef Zone

LUNCH BREAK | 12:30 - 14:00 (EST)

GCFI Board of Directors Meeting | 12:30 - 14:00 (EST)



THURSDAY 10TH NOVEMBER

INVERTEBRATES AND AQUACULTURE (14:00 - 16:00)

- 14:00 **James Foley (V)** Promoting gender equity in Belize's coastal communities through TNC's seaweed mariculture program.
- 14:15 **Jewel Thompson Beneby** Community-based approach to queen conch management in The Bahamas
- 14:30 **Ruben Azcarate Molina (V)** Deep Sea Queen Conch (*Aliger gigas*) monitoring Using ROV Technologies in the Seaflower Biosphere Reserve, Colombia
- 14:45 **Eric Saillant** Advances in aquaculture of the tripletail *Lobotes surinamensis*
- 15:00 **Virginia Burns Perez** Inventory of the lobster camp fishery at Turneffe Atoll Marine Reserve: fishing camps, fishing grounds & fishing gears (traps and shades)
- 15:15 **Hanna-May Malahel (V)** Evolution of the benthic communities of Pigeon Islets (Guadeloupe Island, Lesser Antilles) from 2012 to 2021 monitored by a photo-quadrats technique

COFFEE BREAK | 16:00 - 16:30 (EST)

ELASMOBRANCHS | 16:30 - 17:30 (EST)

- 16:30 **Anna Millender** Sex-specific relationships of age and growth of the Brazilian cownose ray, *Rhinoptera brasiliensis*, in the northern Gulf of Mexico
- 16:45 **Ashley Dawdy** Movement behavior and habitat use of cownose rays (*Rhinoptera bonasus*) in Apalachicola Bay, FL
- 17:00 **Bryan Huerta-Beltran** The devil is in the details: molecular identification of guitarfishes sold as "pez diablo"
- 17:15 **Angie Hoover** Shark diversity across three regions of the Chandeleur Island chain found in historic longline survey data

BANQUET RECEPTION | 20:00 - 22:00 (EST)



FRIDAY 11TH NOVEMBER

COMMUNICATION | 8:00 - 9:45 (EST)

- 8:00 **Carolina Garcia (V)** Ocean Info HUB Latin America and the Caribbean Region Node: supporting discovery and interoperability of existing ocean information systems
- 8:15 **Jeffrey Bernus** The Caribbean Cetacean Society, a local network breaking the islands frontiers for Cetacean conservation!
- 8:30 **Christine Ward-Paige** Ocean spaces cannot be well managed without including fishers: the eOceans Smart Fishery Tracker™ is here to help
- 8:45 **William Heyman** Developing a fishery ecosystem plan for the Gulf of Mexico
- 9:00 **Emma Humphreys** Reeling in the public's attention: Using gulf species for genetic education
- 9:15 **Judith Raming** Enforcement by awareness in the Bonaire National Marine Park
- 9:30 **Sepp Haukebo** Participatory assessment of climate vulnerability in Caribbean recreational fisheries
- 9:45 **Tabitha Stadler** Exploring the reasons why conservation education and science communication are failing to promote behavior change

COFFEE BREAK | 10:00 - 10:30 (EST)

SCIENCE & INNOVATION | 10:30 - 12:30

- 10:15 **Jennifer Tocny** Environmental monitoring: A management tool for natural areas of Guadeloupe Port Authority
- 10:30 **Kim De Mutsert** Using coupled modeling to evaluate effects of nutrient and hypoxia reductions on living marine resources
- 10:45 **Joana Dias** Development of a multiplex species-specific ddPCR™ assay for detection and quantification of Greater Amberjack *Seriola dumerilli* and three congeners in the Gulf of Mexico and south-east coast of Florida
- 11:00 **Nicole Phillips** Using environmental DNA to fill data gaps for elusive marine species
- 11:15 **Jamie Clark** Ageing fish with Fourier-transform near infrared spectroscopy: theory and case study (White Grunt, *Haemulon plumieri*)
- 11:30 **Brice Semmens** Emerging conservation technologies for fisheries assessment and conservation
- 11:45 **Nicole Phillips** Using environmental DNA to fill data gaps for elusive marine species
- 12:00 **Omar Abril-Howard (V)** Integrating ROVs technologies with an Artificial Intelligence module to support the queen conch (*Aliger gigas*; Linnaeus, 1758) monitoring in deep-sea ecosystems in the Colombian insular Caribbean
- 12:15 **Frank Muller-Karger** Marine Life 2030: Building global knowledge of marine life for local action

LUNCH BREAK | 12:00 - 14:00 (EST)



FRIDAY 11TH NOVEMBER

KEYNOTE PRESENTATION| 14:00 - 15:00 (EST)



DR. LEKELIA "KIKI" JENKINS

Insights Into Improving the Adoption of Bycatch Reduction Devices

Dr. Jenkins is a marine sustainability scientist and Associate Professor at Arizona State University. She grew up in Baltimore, Maryland, fishing and crabbing recreationally on the Chesapeake Bay and volunteering as a junior zookeeper. She received her PhD from Duke University by pioneering a new field of study into the invention and adoption of marine conservation technology. Her research centers on the human dimensions of marine sustainability solutions, including fisheries conservation technologies and marine renewable energy.

Her work has led to regulatory changes that allow more sustainable fishing practices, has advised international fisheries diplomacy, and has informed renewable energy policy. Dr. Jenkins also studies the science dance as a means of science engagement, science communication, and social change. Among her many honors and awards, she received an Alfred P. Sloan Research Fellowship in Ocean Sciences and is a member of to the National Academies of Sciences Ocean Studies Board.

STUDENT AWARDS & CLOSING CEREMONY | 15:30 - 16:30

